

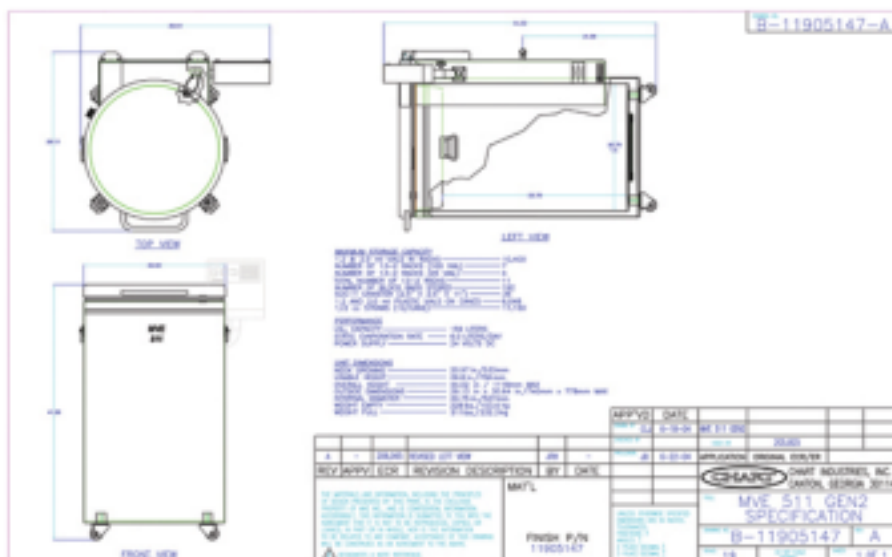
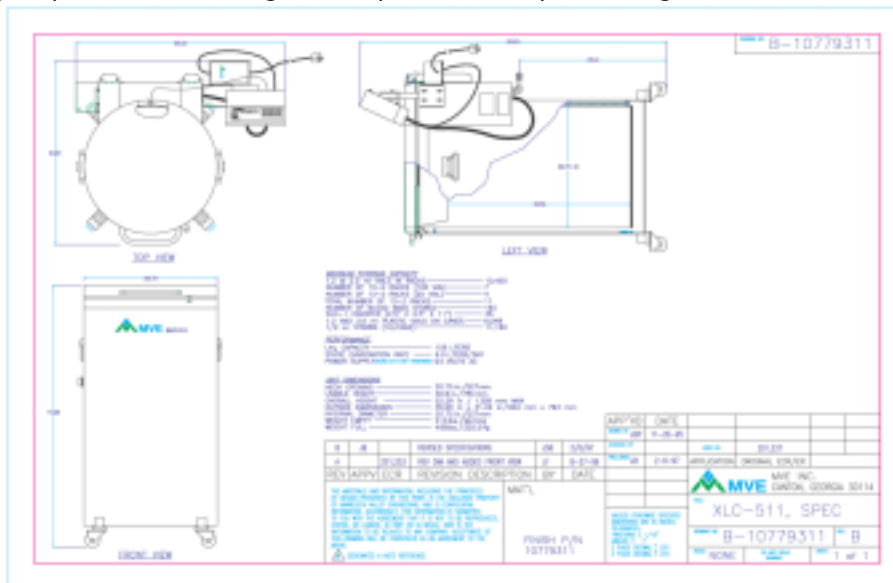
# MVE Tech Tips

A monthly publication for the MVE Biological Products Distributors

November 2004

## 511 & 511 GEN2

In the October edition of Tech Tips, we introduced the 511 GEN2 units with everything that will be offered and their associated part numbers. The general differences between the older 511 (which has been phased out) and the 511 GEN2 are the width and height dimensions. The inside and outside diameters remain the same. The usable inside height has been reduced by  $\sim 1\text{-}3/16"$ . The lid assembly now includes a liner over the cork. The liner and cork are slightly thinner than the cork on the old unit. The reduction in inside height and cork/liner thickness provide a lift over height that is  $\sim 3.1"$  less than the old unit. This also reduces the height with the lid open by the same amount, making it easier to reach the lid handle to close the lid. The controller sits 8.25" lower than on the old unit on a more substantial bracket that hides all of the wiring for improved appearance. When a battery backup is installed, it is enclosed in the rear enclosure instead of attached to the side of the freezer for a more compact and tidy appearance. Although the front to rear depth does not change, the width with controller installed is reduced by  $\sim 5"$ . All advertised storage capacities are unchanged. Compare the two spec drawings below.



Part numbers and prices for each option listed in last month's Tech Tips available upon request by contacting Customer Service.

## NEW POWER SUPPLY PARTS

As the new Jerome power supply (11795030) replaces the old MDC transformer (10883169) there are some part numbers you will need to be aware of. The detachable power cord for the Jerome supply does not come standard under the transformer's part number. It must be ordered separately as 10946596. In addition, because of this cord's increased length, the hospital extension cord normally supplied with each freezer will no longer be standard on any model. If requested, you must order part number 110558494.

## IATA REGULATIONS ON DOBLE UNITS

It is important to realize that the Doble models apply to certain portions of IATA regulations. That portion pertains to shipping specimens in a vapor shipper where the absorbed liquid nitrogen does not fall under hazardous material classification. This does not apply to the shipment of biohazards. Below is a copy of the exception letter:



*Innovation. Experience. Performance.*



### LETTER EXPLAINING EXCEPTION

This is concerning the applicability of the Federal Hazardous Material Regulations to the shipment of refrigerated samples in the "Dry Shipper" container.

A "Dry Shipper" package consists of an outer container that is lined with an absorbent material. The container is charged with nitrogen-refrigerated liquid, which is absorbed into the container lining. The charged, completed package serves as a refrigerated container for the shipment of samples.

Because of the manner in which it is absorbed and because there is no free liquid present in the packaging, the liquid nitrogen does not exhibit the characteristics of a "cryogenic liquid" as defined in 49 CFR 173.115 (g) and does not pose a hazard in transportation. Therefore, it is not subject to regulation under the Department of Transportation's Hazardous Materials Regulations.

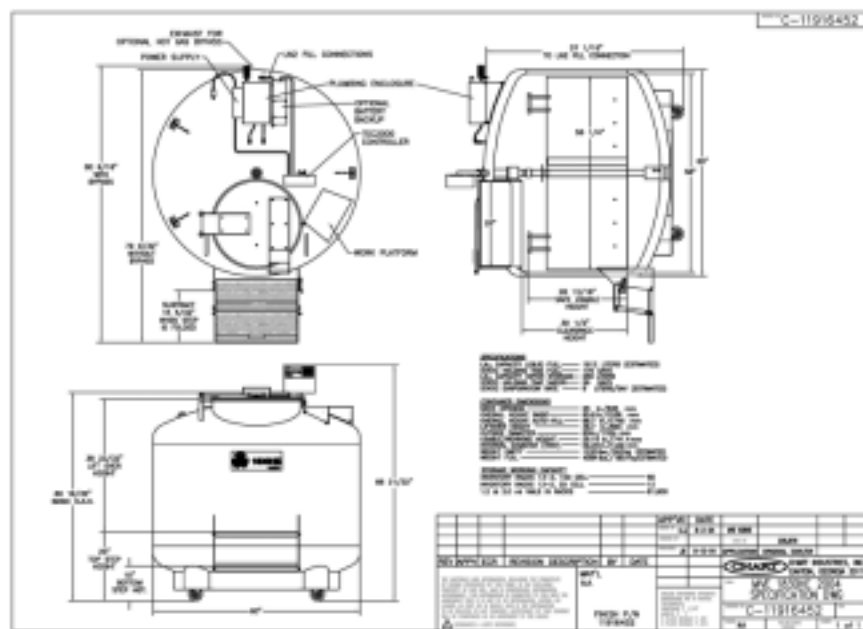
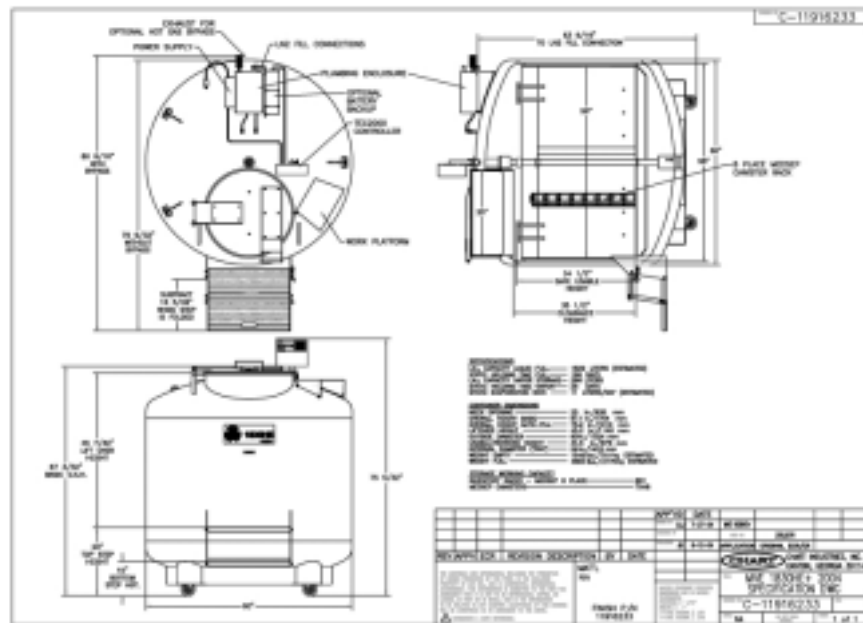
However, if the packaging was improperly offered for transportation WITH free liquid present, it would be subject to regulation when offered for transportation by air (see 49 CFR 173.320) and must be offered in accordance with the International Civil Aviation Organization's (ICAO) Technical Instruction. Note the packaging does not conform to ICAO Packaging Instruction 202 and therefore is not an authorized packaging when containing free liquid.

In consideration of the above, consultation with the Research and Special Programs Administration of the DOT has determined that the use of nitrogen refrigerated liquid charged "dry shipper" containers for the shipment of samples falls within the regulation exception provided in 49 CFR 173.30. Paragraph (a) of the section states the requirements of this subchapter do not apply to atmospheric gases and helium when used in the operation of the process system, such as a refrigeration system. Paragraph (c) of 173.320 pertains to air transport of same refrigeration system. For exception status of air shipments please refer to IATA-Dangerous Goods Regulations for nitrogen-refrigerated liquid. This falls in the class of 2.2 non-flammable gases packing instructions 202 with special provisions A-800. For answers to questions regarding shipping regulations contact the Chart/MVE Bio-Medical Technical Service Representative.

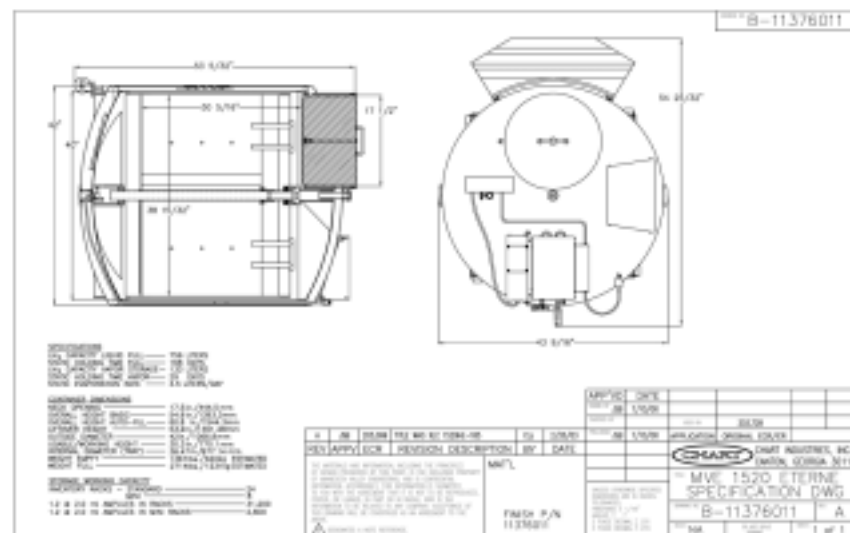
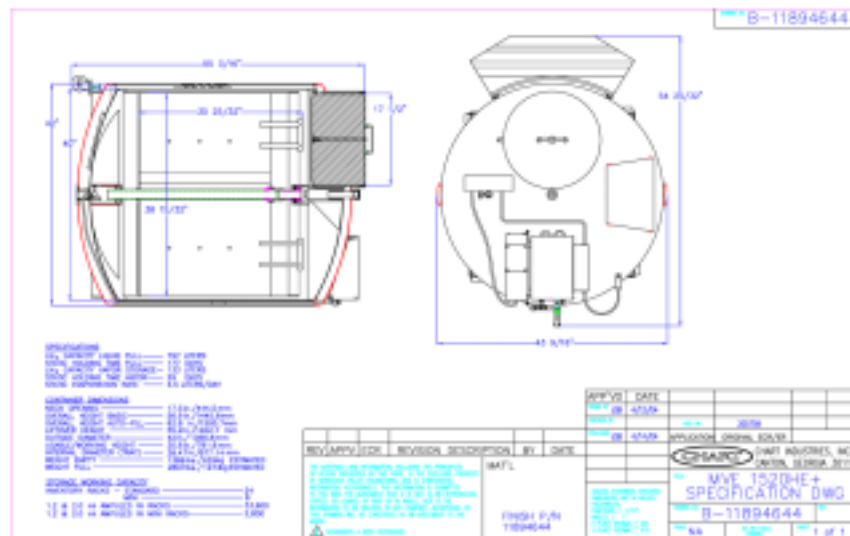
Jim Bachman  
Technical Service Rep.  
Bio-Medical Div.  
Chart Inc.

## HE+ VERSUS HE ETERNE

You may have noticed the 1520HE+ and 1830HE+ in some of our literature or on our website. The basic difference is in the increased working height of the inner. You will also notice an increase in the overall height of each. Compare the spec sheets attached:



## HE+ VERSUS HE ETERNE (CONTINUED)



For additional information on availability and price, please contact your Chart customer service representative.

### BIO-MEDICAL CUSTOMER AND TECHNICAL SERVICE

Customer Service 888 683-2796 toll free  
Technical Service 866 819-5897



www.PrincetonCryo.com | Sales@PrincetonCryo.com | 800.232.2796