

# MVE Tech Tips

*A monthly publication for the MVE Biological Products Distributors*

*August 2004*

## POWER SUPPLY

The new power supply is regulated, where the old MDC power supply is unregulated (essentially a step down transformer with some noise filtering). This means that the new power supply monitors current flow downstream of the power supply and regulates output accordingly, while the old MDC power supply does not. These Jerome power supplies will be replacing the MDC units and the **part number is 11795030**. We will be using the Jerome models to replace any MDC units if they need to be replaced. Remember when ordering 11795030 you must include the power cord (pn 10946596). This is not included with the power supply.

## MVE-511 GEN II

The newest revision of the MVE-511 has been released. Below are the new part numbers that have been established:

11905016	FNL MVE-511 GEN II
11905067	FNL MVE-511 GEN II F
11905075	FNL MVE-511 GEN II F-GB-BB
11905083	FNL MVE-511 GEN II FD
11905091	FNL MVE-511 GEN II FD-GB BB
11905104	FNL MVE-511 GEN II FD-GB-BB MDDCE

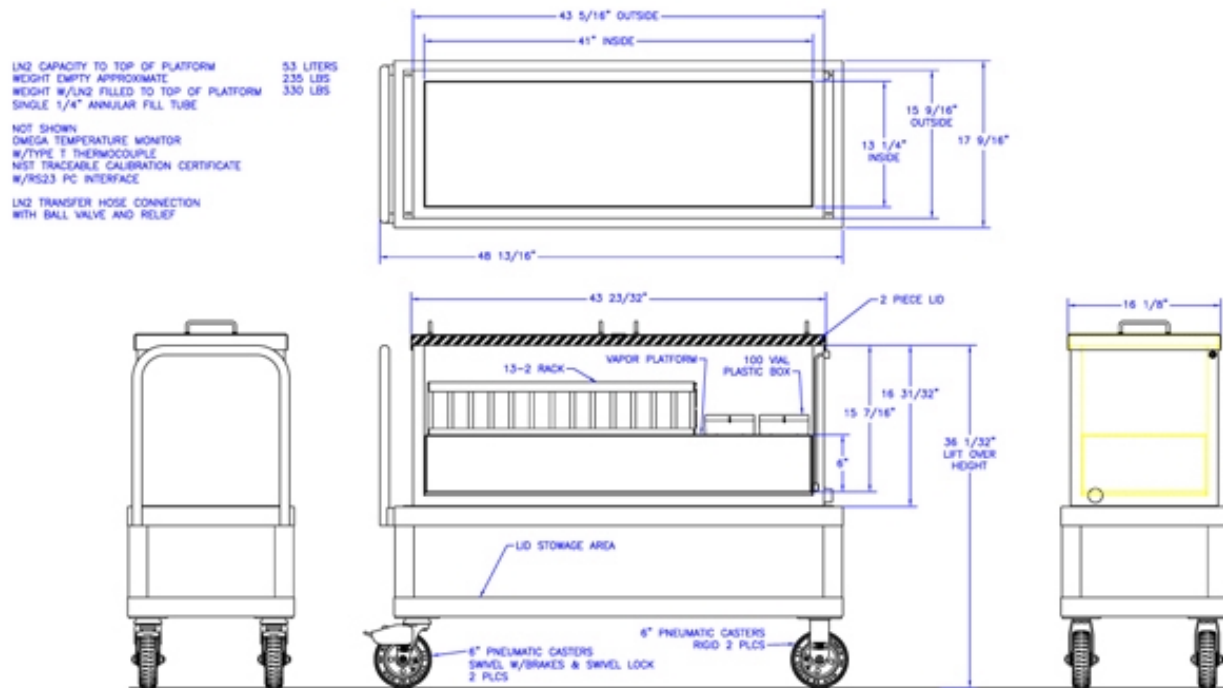
The difference between GEN II and GEN I is the O.A.H. is shorter than the older 511 model. However, it can still take the 13-2 rack because of a shorter lid silhouette. **Call customer service for pricing.**

## HINGE REPLACEMENT

This has not changed since in February when our supplier discontinued our original hinge used on the cabinet models and the 1840/1841 and 1211. The hinge kit, which is made up of two stainless steel plates, matches the hole pattern of the original hinge. These must be ordered along with the new hinges if old hinges being replaced are 2000 or older. Remember to order for each hinge being replaced, one of P/N 11087666. This includes the small plate (lid side), the large plate (freezer side), all of the machined screws and installation instructions and diagrams. Also remember to include one hinge (P/N 10772670). Each freezer will require two of the above.

## CRYOCART

Below is a spec drawing of our latest revision level of the Cryo-Cart. This portable working platform will hold 53 liters of LN2 and has its own fill line that can be connected to any 1/2" ODT inert transfer hose.



CRYO CART SPECIFICATION SKETCH REVISION A

## BIO-MEDICAL CUSTOMER AND TECHNICAL SERVICE

Customer Service	888 683-2796 toll free / 952 882-5000 Burnsville receptionist
	800 232-9683 fax
Technical Service	952 641-6115 direct line
	866 819-5897 toll free
	612 382-6678 cell
	800 232-9683 fax

For copies of past Tech Tips or for more information on maintaining your nitrogen storage dewars, please contact Jim Bachman at (952) 641-6115, Fax (800) 232-9683.

## DECONTAMINATION OF HE SERIES FREEZERS



### **SANITIZING AND DECONTAMINATING**

#### **MVE ALUMINUM AND XLC DEWARs**

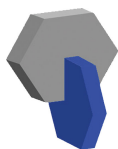
MVE aluminum dewars are constructed with an aluminum inner that utilizes a fiberglass neck support. The stainless units are constructed with an inner entirely fabricated from stainless steel sheets. Any cleaning solution that does not react with aluminum or stainless can be used in the sanitation process of these dewars. In most cases, any household detergent or mild soap solution is suitable. The U.S. Custom Service uses a solution called EXPOR for incoming shipments from abroad. This is mixed 9 parts water to 1 part EXPOR, and is applied with a spray nozzle. EXPOR is a sporocidal agent mixed with sodium chloride & lactic acid. As mentioned above, however, any household cleaning solution can be used. These include bleach, detergents, and mild soaps. Other cleaners and disinfectants that can be safely used include hydrogen peroxide, chlorine/water and denatured alcohol. NOTE: DO NOT USE ANY PETROLEUM BASED CLEANING SOLUTIONS. It is important that the inner vessel is thoroughly rinsed with water and all cleaner residues have been removed. Spraying the solution into the inner vessel is preferred, although agitation of the solution inside the inner will suffice. Vapor shippers and Doble units will require filling the inner to its full capacity with the cleaning mixture and then rinsing. Allow the unit to dry thoroughly before putting into service. With vapor shippers, we suggest setting dewar inverted to drain and dry. This process is not intended for use in older vapor shipper models manufactured prior to 1994.

The generally accepted practice of using 10% chlorine bleach with 90% water solution still holds as the best method for decontamination. However, with some of the bovine and swine virus strains showing up, it is the conclusion of the agricultural experts at the University of Minnesota and Texas A & M that an increased mixture of chlorine bleach to 30% and 70% water will kill all known viruses except BME. This is still unknown to them and they are not willing to offer a solution.

To perform this sanitizing procedure, cover all inner surfaces with the solution, let stand for 30 minutes and remove. Rinse the decontaminated surfaces with clean water and remove rinse water. Allow dewar to dry before putting into service. For vapor shippers and Doble units, place dewar on end (inverted) and allow to dry. Note: vapor dewars can be used immediately after rinsing but may take longer to recharge to 100% capacity.

If you have any questions concerning decontaminating dewars please contact Bio-Medical Technical Service @ 952 641-6115.

Decontaminating the interior of the HE units is made more difficult due to the turntable. One of the bottom pieces to the tray is hinged and allows access below the bottom of the tray. After covering all surface areas with the decontamination solution and allowing to soak for the recommended time, remove the solution using a shop vac or wet vac cleaner. Rinse the inner with clean water and remove rinse water in the same fashion. Placing a window fan over the top access port will speed up the drying process.



8 ]ghf]Vi hYX'Vm

PrincetonCryo.com

Cryogenic Delivery and Storage Systems

www.PrincetonCryo.com | Sales@PrincetonCryo.com | 800.232.2796