

# MVE Tech Tips

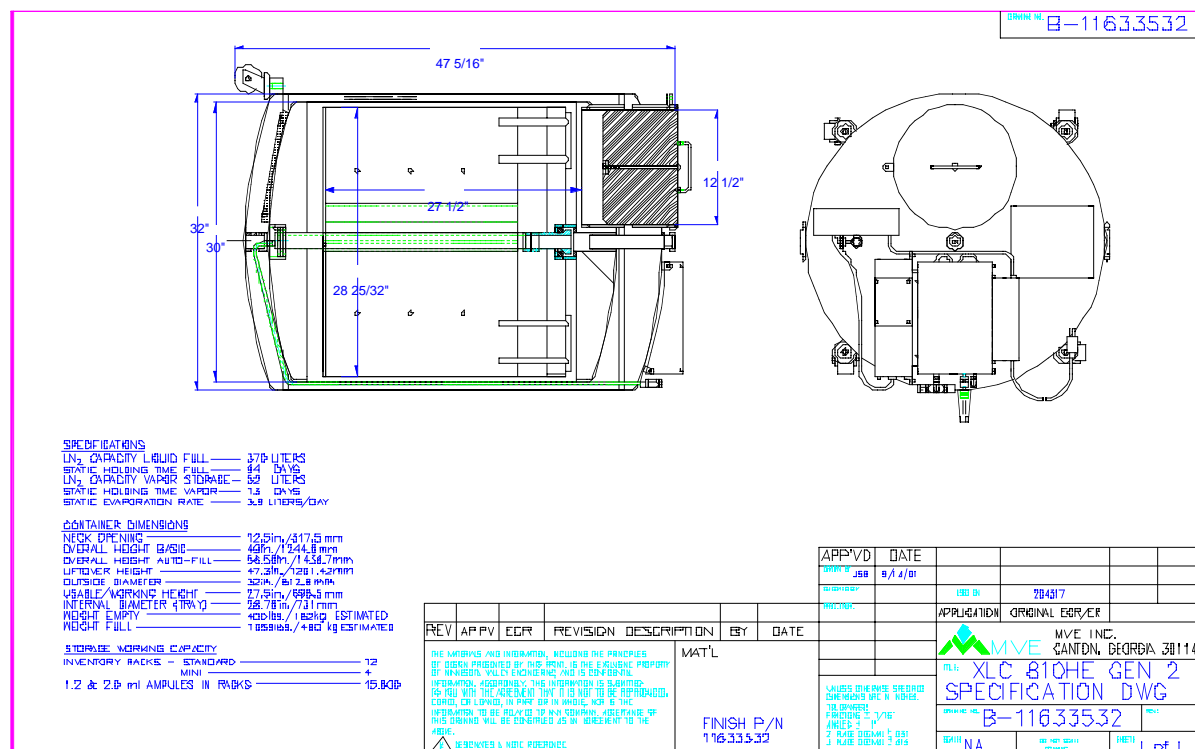
A monthly publication for the MVE Biological Products Distributors

November 2002

## ANNOUNCING PRODUCTION OF MVE 810HE GEN II:

As of November all MVE 810HE units will be the GEN II design. Below is a spec sheet comparing the XLC 810HE Gen I to the MVE 810HE Gen II and the MVE 810HE-190 and a drawing of the MVE 810HE Gen II for your files. If you have any questions on this unit or any others you can contact Gil Edwards, Technical support at 770 720 6714.

XLC 810HE vs. XLC 810HE GEN. 2/-190			
	XLC 810HE ORIGINAL	XLC 810HE GEN 2	XLC 810HE -190
LIFT OVER HEIGHT	48.5"	47.3"	47.3"
OUTSIDE DIAMETER	31.1"	32"	32"
INSIDE DIAMETER (USEABLE)	27.42"	28.78"	28.78"
INSIDE HEIGHT (USEABLE)	27.75"	27.5"	27.5"
NECK OPENING	12.13"	12.5"	12.5"
LN2 CAPACITY UNDER TRAY	52L	52L	52L
LN2 CAPACITY FULL	342L	370L	370L
NOMINAL EVAPORATION RATE	3.9L/D	3.9L/D	3.9L/D
STATIC HOLDING TIME IN VAPOR PHASE	13 DAYS	13 DAYS	13 DAYS
STATIC HOLDING TIME IN LIQUID PHASE	87 DAYS	94 DAYS	94 DAYS



## **AI CRYO PRICING FOR 2003**

The AI Cryo Price lists will be mailed out the week of November 11th to all our distributors. This new price list will go into effect as of January 1, 2003 so please keep this in mind when doing December quotes. Please make sure all members of your sales team and purchasing departments get a copy of the 2003 Price list. If you need any more copies you can contact customer service at 888-683 2796. Thank you and regards.

Lois Tuma  
Customer Service Supervisor.

## **DID YOU NOTICE?**

We are changing the model names of our freezers from XLC to MVE. This Model Name change will make it easier for everyone to recognize and order the #1 World leader in Cryogenic Freezers.

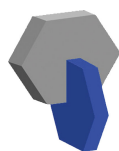
If you have any questions please contact your MVE/Chart customer service representative @ 888 683-2796.

Any questions concerning your XLC freezer please contact Gil Edwards @ 770-720-6714.

E-mail [gil.edwards@chart-ind.com](mailto:gil.edwards@chart-ind.com)

Questions concerning aluminum dewars can be directed to Jim Bachman at 952 758-8520.

E-mail [jim.bachman@chart-ind.com](mailto:jim.bachman@chart-ind.com)



8 ]ghf]Vi hYX`Vm

**PrincetonCryo.com**

Cryogenic Delivery and Storage Systems

[www.PrincetonCryo.com](http://www.PrincetonCryo.com) | [Sales@PrincetonCryo.com](mailto:Sales@PrincetonCryo.com) | 800.232.2796