

DURA-CYL®

PREMIUM LIQUID CYLINDERS - CASTER BASE

The Dura-Cyl series is a premium transportable liquid cylinder for cryogenic service. The patented internal support system design and quality construction makes the Dura-Cyl series the most efficient yet rugged cylinder on the market today. Along with the patented Liquid Cylinder Control Manifold (LCCM) and our wide choice of caster base options, the Dura-Cyl Series is also the most user-friendly cylinder available. Adding our industry-leading five-year vacuum warranty and you get the lowest cost of ownership – making the Dura-Cyl, the preferred choice in transportable liquid cylinders.

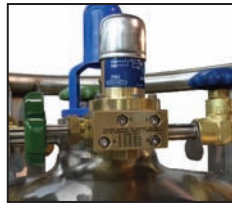
See Footring specification sheet (PN 14338395).



Patent no's • 4,548,335 • 5,136,852 • D344,572



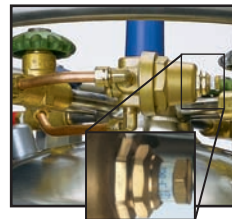
The Roto-Cal™ gauge features an easy-to-read dial liquid level indicator with swivel head design.



LCCM Models have an integral mounted combination pressure control regulator, isolation valve and a calibrated dome control knob.



The Dura-Cyl LP features a liquid globe valve with an extended stem for less ice build-up on the handle for easier operation.



MCR Models have a combination pressure control regulator with an exclusive, calibrated micrometer adjusting screw.



Some models available with either round or square caster bases for safe and easy mobility.

PRODUCT HIGHLIGHTS

- Ideal for liquid nitrogen, oxygen, argon, CO₂ or nitrous oxide
- Different sizes, pressures, and features to meet your needs
- Stainless steel construction
- Thick, dent-resistant outer shell
- Patented durable, inner-vessel support system
- Large diameter handling ring with four supports
- Optional Multi-functional Control Regulator (MCR) available
- Roto-Cal Liquid Level Gauge System
- Five-year vacuum warranty

DURA-CYL®

PREMIUM LIQUID CYLINDERS - CASTER BASE

Caster Base Specifications

| MODEL | | 120 L RB | 230 L RB | 230 L RB | 230 L RB | 230 L SB | 230 L SB | 230 L SB | 265 L RB | 265 L RB | 265 L SB | 265 L SB |
|---|-----------------------------------|-----------|------------|------------|------------|------------|------------|------------|------------|------------|------------|------------|
| | Pressure | LP | LP | MP | HP | LP | MP | HP | MP | HP | MP | HP |
| LCCM | Part Number | — | — | — | 10616546 | — | 10496468 | 10496492 | — | — | 10510039 | 10512561 |
| MCR | Part Number | — | — | 10783635 | 10783651 | — | 10810779 | 10794027 | 10783678 | 10783694 | — | — |
| None ⁽⁴⁾ | Part Number | 10648396 | 10648599 | — | — | 10648556 | — | — | — | — | — | — |
| CAPACITY⁽¹⁾⁽²⁾ | | | | | | | | | | | | |
| Liquid (Gross) | (liters) | 120 | 240 | 240 | 240 | 240 | 240 | 240 | 276 | 276 | 276 | 276 |
| Liquid (Net) | (liters) | 110 | 230 | 230 | 230 | 230 | 230 | 230 | 265 | 265 | 265 | 265 |
| Gas (N ₂) | ft ³ / Nm ³ | — | — | 5,024/132 | 4,734/124 | — | 5,024/132 | 4,734/124 | 5,769/152 | 5,438/143 | 5,769/152 | 5,438/143 |
| Gas (O ₂) | ft ³ / Nm ³ | — | — | 6,244/164 | 5,930/156 | — | 6,244/164 | 5,930/156 | 7,186/189 | 6,811/179 | 7,186/189 | 6,811/179 |
| Gas (Ar) | ft ³ / Nm ³ | — | — | 6,073/160 | 5,763/151 | — | 6,073/160 | 5,763/151 | 6,982/183 | 6,634/174 | 6,982/183 | 6,634/174 |
| Gas (CO ₂) | ft ³ / Nm ³ | — | — | — | 4,614/121 | — | — | 4,614/121 | — | 5,305/139 | — | 5,305/139 |
| Gas (N ₂ O) | ft ³ / Nm ³ | — | — | — | 4,378/115 | — | — | 4,378/115 | — | 5,034/132 | — | 5,034/132 |
| PERFORMANCE | | | | | | | | | | | | |
| NER (N ₂) | % per day | 2.0 | 1.5 | 1.8 | 1.8 | 1.5 | 1.8 | 1.8 | 2 | 2 | 2 | 2 |
| NER (O ₂ - Ar) | % per day | 1.4 | 1.0 | 1.2 | 1.2 | 1.0 | 1.2 | 1.2 | 1.4 | 1.4 | 1.4 | 1.4 |
| NER (CO ₂ - N ₂ O) | % per day | — | — | — | 0.5 | — | — | 0.5 | — | 0.5 | — | 0.5 |
| Gas Flow (N ₂ , O ₂ , Ar) | SCFH/Nm ³ /hr | — | — | 400 / 10.5 | 400 / 10.5 | — | 400 / 10.5 | 400 / 10.5 | 400 / 10.5 | 400 / 10.5 | 400 / 10.5 | 400 / 10.5 |
| Gas Flow (CO ₂ , N ₂ O) | SCFH/Nm ³ /hr | — | — | — | 110 / 2.9 | — | — | 110 / 2.9 | — | 110 / 2.9 | — | 110 / 2.9 |
| DIMENSIONS & PRESSURE RATINGS | | | | | | | | | | | | |
| Relief Valve Setting | psig / barg | 22 / 1.5 | 22 / 1.5 | 230 / 16 | 350 / 24 | 22 / 1.5 | 230 / 16 | 350 / 24 | 230 / 16 | 350 / 24 | 230 / 16 | 350 / 24 |
| DOT/TC Rating | | 4L100 | 4L100 | 4L200 | 4L292 | 4L100 | 4L200 | 4L292 | 4L200 | 4L292 | 4L200 | 4L292 |
| Diameter | in / cm | 20 / 50.8 | 26 / 66.0 | 26 / 66.0 | 26 / 66.0 | 26 / 66.0 | 26 / 66.0 | 26 / 66.0 | 26 / 66.0 | 26 / 66.0 | 26 / 66.0 | 26 / 66.0 |
| Height ⁽³⁾ | in / cm | 51/129.5 | 57.2/145.3 | 57.2/145.3 | 57.2/145.3 | 56.8/144.3 | 56.8/144.3 | 56.8/144.3 | 59.9/152.2 | 59.9/152.2 | 59.5/151.1 | 59.5/151.1 |
| Tare Weight | lb / kg | 165/74.8 | 275/125 | 300/136.1 | 340/154.2 | 311/141 | 300/136.1 | 340/154.2 | 340/154.2 | 360/163.6 | 340/154.2 | 360/163.6 |
| Full Weight (N ₂) | lb / kg | 361/164 | 685/311 | 664/301 | 683/310 | 543/247 | 664/301 | 683/310 | 758/344 | 754/343 | 758/344 | 754/343 |
| (O ₂) | lb / kg | 442/201 | 854/388 | 817/370 | 831/377 | 890/407 | 817/370 | 831/377 | 935/424 | 924/420 | 935/424 | 924/420 |
| (Ar) | lb / kg | 503/229 | 982/446 | 928/421 | 936/424 | 1,018/463 | 928/421 | 936/424 | 1,062/481 | 1,046/475 | 1,062/481 | 1,046/475 |
| (CO ₂) | lb / kg | — | — | — | 868/393 | — | — | 868/393 | — | 967/439 | — | 967/439 |

(1) Gas capacities at DOT4L limits. See manual P/N 10642912 for details.

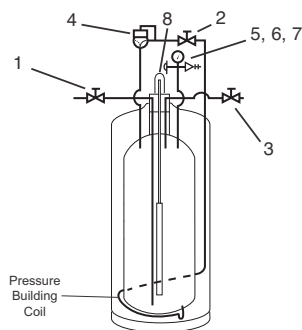
(2) Most of the Dura-Cyl models are available with permanently installed CGA fittings for medical applications. Contact Customer Service for details.

(3) Dimensions are measured from the floor to the top of the sight gauge protector. (4) Pressure building regulator optional on LP models.

RB = Round Base SB = Square Base

Note: All caster base models are available with stainless steel casters.

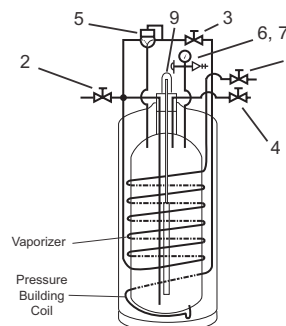
NER=Nominal Evaporation Rate



Model: LP - Low Pressure (Liquid Use Only)

Nomenclature

1. Fill / Liquid Valve
2. Pressure Building Valve
3. Vent Valve
4. Pressure Building Regulator (optional)
5. Pressure Gauge
6. Pressure Relief Valve
7. Rupture Disk
8. Liquid Level Gauge



Model: MP & HP - Medium & High Pressure (Liquid or Gas Use)

Nomenclature

1. Gas Use Valve
2. Fill / Liquid Valve
3. Pressure Building Valve
4. Vent Valve
5. Combination Pressure Building Regulator
6. Pressure Gauge
7. Pressure Relief Valve
8. Rupture Disk
9. Liquid Level Gauge

Chart Inc.
U.S.: 1-800-400-4683
Worldwide: 1-952-758-4484



© 2009 Chart Inc.
P/N 14336761
www.chart-ind.com